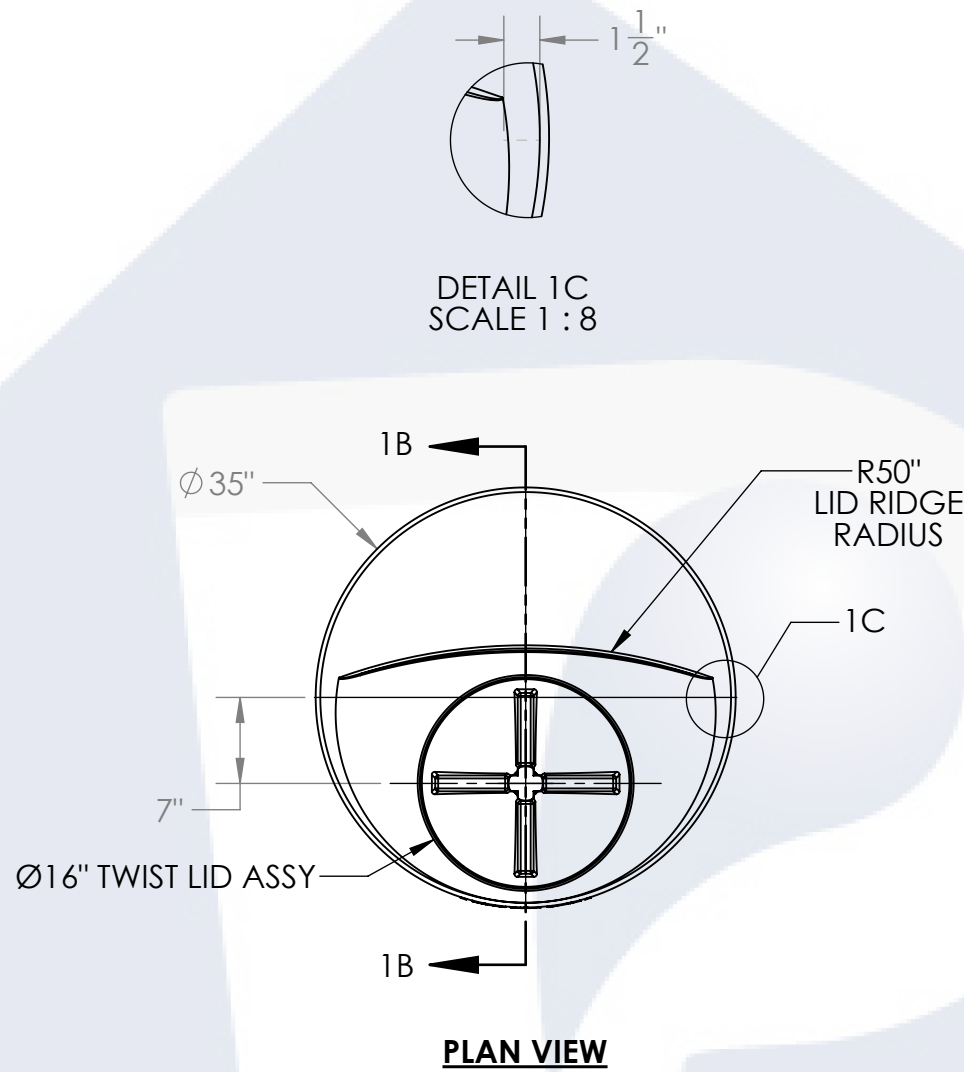
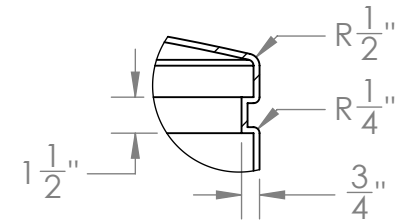


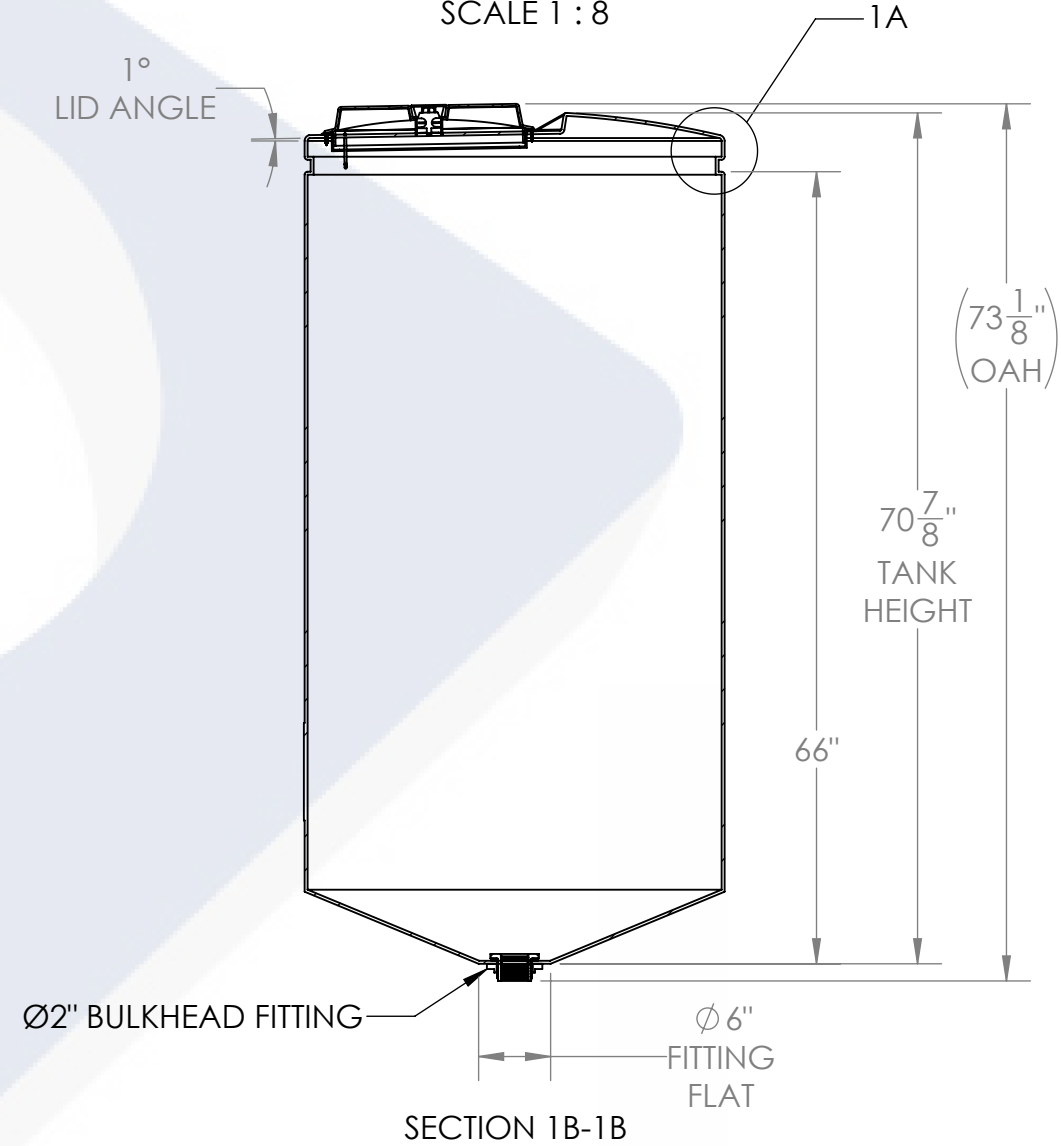
**ISOMETRIC VIEW  
(FRONT)**



**DETAIL 1C  
SCALE 1 : 8**



**DETAIL 1A  
SCALE 1 : 8**



- NOTES:**
- CAPACITY: 250 GAL. NOMINAL
  - TANK MATERIAL: MDPE
  - SERVICE PRESSURE: ATMOSPHERIC
  - NSF/ANSI STANDARD 61 CERTIFIED

**PROPRIETARY AND CONFIDENTIAL**  
THE INFORMATION CONTAINED IN THIS DRAWING IS THE SOLE PROPERTY OF PEABODY ENGINEERING. ANY REPRODUCTION IN PART OR AS A WHOLE WITHOUT THE WRITTEN PERMISSION OF PEABODY ENGINEERING IS PROHIBITED.

UNLESS OTHERWISE SPECIFIED:  
DIMENSIONS ARE IN INCHES  
TOLERANCES: ±1/4"  
ANGULAR: ± .5°  
ONE PLACE DECIMAL: ± .125  
TWO PLACE DECIMAL: ± .063  
THREE PLACE DECIMAL: ± .016

TANK MATERIAL: -  
INNER TANK S/N:  
OUTER TANK S/N:  
CUSTOMER PO#

DO NOT SCALE DRAWING

	NAME	DATE
DRAWN	SMF	03/01/23
CHECKED		
ENG APPR.		
MFG APPR.		
Q.A.		



PROJECT: **PROCHEM® TANKS**  
CUSTOMER: **PEABODY STANDARD**  
SITE/LOCATION: -  
SALES ORDER: -

SIZE	DESC.	REV.
<b>B</b>	<b>250GAL CONE BOTTOM TANK</b>	<b>B</b>

SCALE: 1:16 SHEET 1 OF 1